

## **NEW TARGET ZONE IDENTIFIED AT CERRO VERDE**

### **CERRO VERDE, CHILE**

- **New Copper-Gold-Silver corridor delineated**
- **Strongly anomalous samples returned over 4km of strike**
- **New corridor located to the east and outside of known workings and previous exploration**
- **Analytical results up to 10g/t gold, 7.3% copper and 260 g/t silver returned**
- **Mineralisation now identified over 6km x 3km area**
- **New corridor open to the north, south and east**
- **Plans to accelerate exploration activities at Cerro Verde**

Genesis Minerals Limited ("Genesis", ASX: GMD) is pleased to report on results from its ongoing exploration program at the Cerro Verde Copper-Gold-Silver Project ("Project") in northern Chile.

Analytical results have been returned for the entire 178 rock chip samples collected during the recent mapping phase at the Project. Highly anomalous assays up to 10 g/t gold, 7.3% copper and 260g/t silver were returned from the final 86 samples (see Table 1 and Figures 1 to 3).

Exploration has delineated a new corridor of prospective veins, structures and stockwork zones to the east of the previously known mineralised zones and historic workings. This new 4km long by 1km wide corridor (see Figures 1 to 3), defined by rock chip sampling and first pass mapping, is open to the north and south. Mineralisation has now been identified to extend over a 6km long by 3km wide zone.

Mineralisation is still open to the south, north and east, and a number of areas within the Project area remain partially or completely unexplored and warrant first pass sampling and mapping.

"These results from sampling at Cerro Verde are extremely promising and this newly identified mineralised corridor confirms the significant copper and gold potential of the Project," Genesis Managing Director Michael Fowler said. "Exploration will be accelerated in the coming months focusing on the newly defined corridor and will comprise detailed sampling and trenching prior to drilling".

### **Genesis Minerals Limited**

**ASX Code: GMD**

**Issued Capital**  
121.8 million shares  
53.1 million options

**Current Share Price**  
\$0.084

**Market Capitalisation**  
\$10.2 million

**Board Members**  
Michael Haynes  
Chairman

Michael Fowler  
Managing Director/CEO

Damian Delaney  
Non-Executive Director  
Company Secretary

**ABN: 72 124 772 041**

Unit 6, 1 Clive St  
West Perth, WA, Australia, 6005

PO BOX 437, West Perth  
WA, Australia, 6872

T: +61 8 9322 6178

info@genesisminerals.com.au  
www.genesisminerals.com.au

**Registered Office**  
Unit 6, 1 Clive St  
West Perth, WA, Australia, 6005

**Chile Office**  
Av. Estoril 200  
Oficina 837  
Las Condes  
Santiago, Chile  
T: +56 2 951 6785

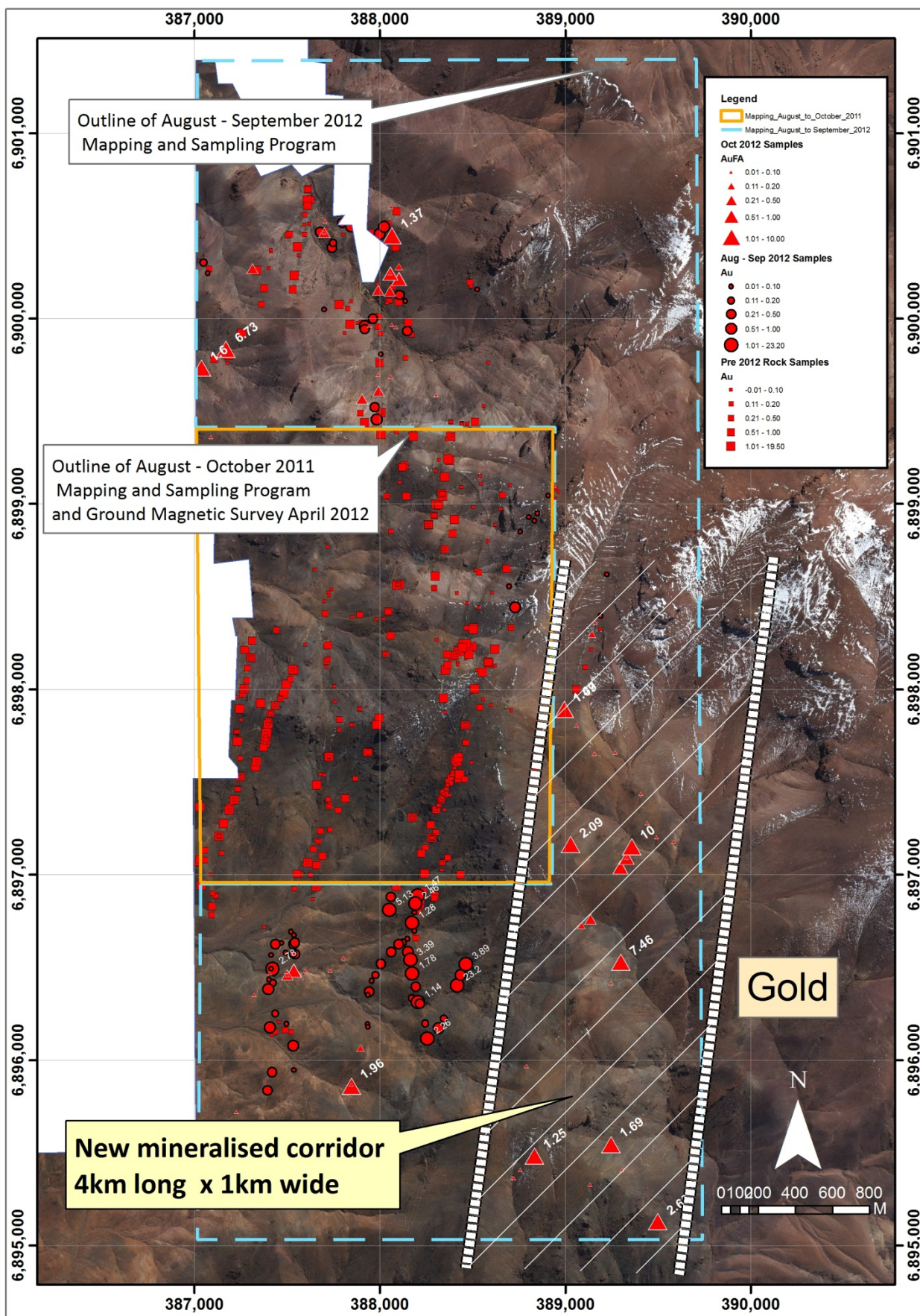


Figure 1 Cerro Verde rock chip sample locations with gold (grams/tonne) values



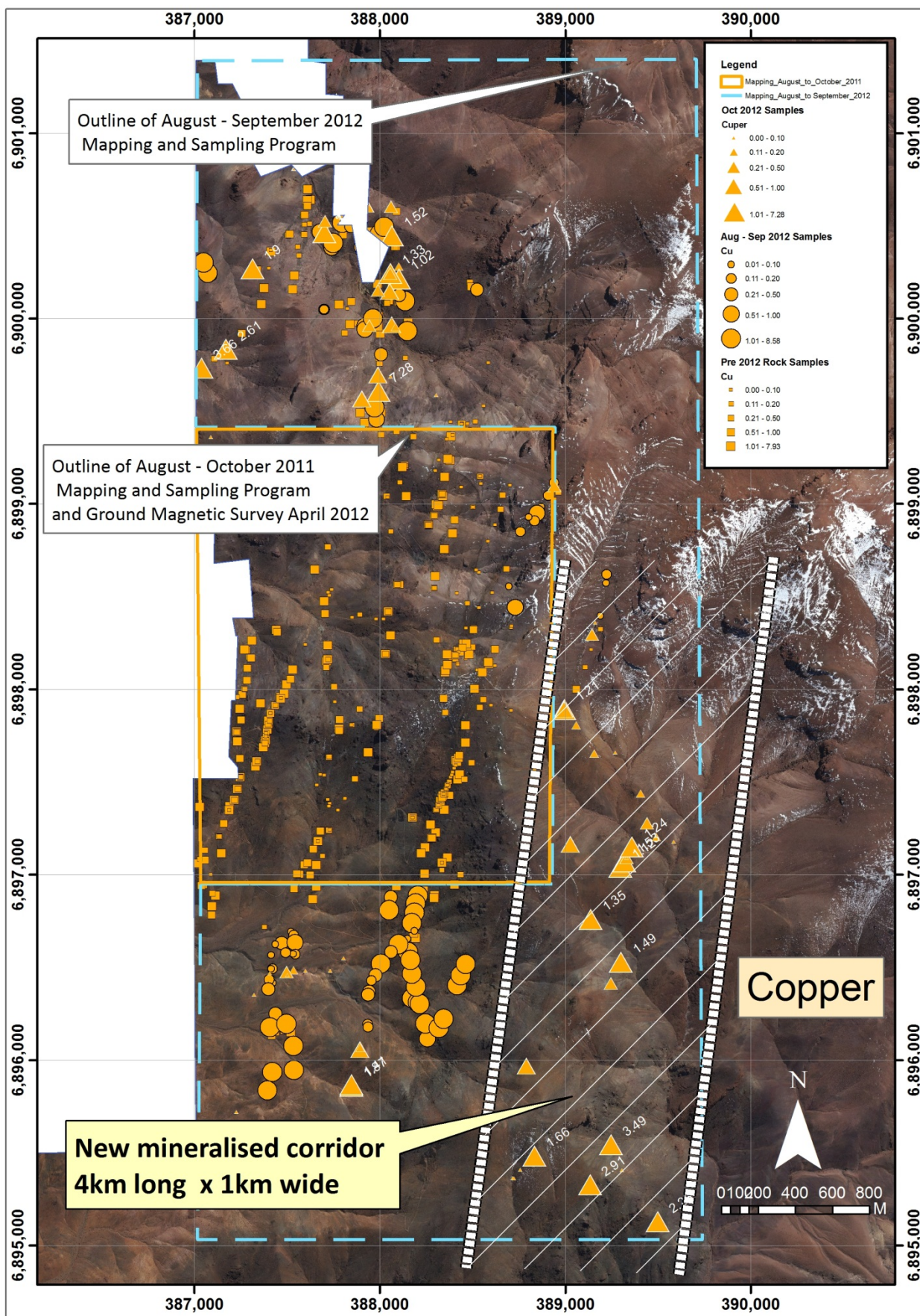


Figure 2 Cerro Verde rock chip sample locations with copper (%) values



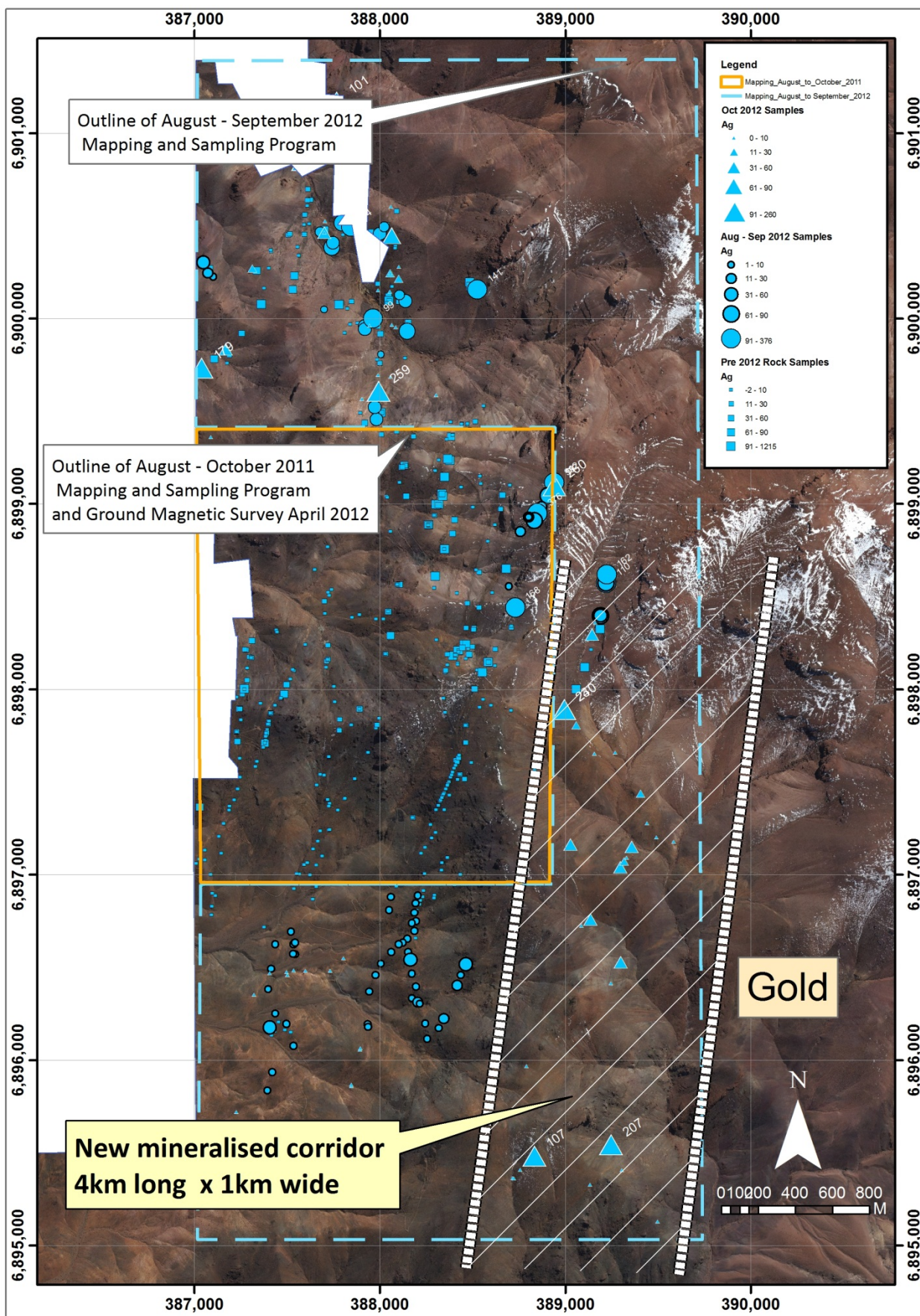


Figure 3 Cerro Verde rock chip sample locations with silver (grams/tonne) values

## Background

### Cerro Verde

Genesis entered into an agreement in August 2010 with a private Chilean company to acquire a 100% interest in the Cerro Verde Gold-Copper-Silver Project in northern Chile (Figure 6). Mining in the area dates back to the 1800s but only limited modern exploration has been completed at the Project. Numerous high grade structures remain untested and the potential to discover new veins is considered high; as is the potential to define a large porphyry system at the Project.

The Project is located in the Atacama Desert in an area serviced by very good infrastructure about 750 km north of Santiago, 80 km south of the city of Copiapó and 75km east of the Pacific Ocean. The Project is easily accessed by a sealed road and well-formed gravel roads from Copiapó. The altitude ranges from 1,800 to 2,200m, with low to moderate relief. Exploration can be conducted all year round.



Figure 4. Project locations

### Exploration Completed

A mapping and sampling program, undertaken over a 4km by 2km area at Cerro Verde during the second half of 2011, outlined over 11.2km of prospective veins and structures. A total of 185 rock chip samples were collected during the mapping phase with analytical results up to 17.3 g/t gold, 7.69% copper and 360g/t silver returned (see Genesis ASX Release dated December 7, 2011).

During August and September 2012 two field crews mapped and sampled an area 2km to the north and 2km to the south of the previous detailed 2011 exploration work, as well as an area 1km to the east (see Genesis ASX Release dated October 17, 2012).

**Michael Fowler**

**Managing Director**

**Further Information**

+61 8 9 322 6178 or [mfowler@genesisminerals.com.au](mailto:mfowler@genesisminerals.com.au)

Table 1. Rock chip sample locations and analytical results.

Sample	PSAD56 North	PSAD56 East	Elevation	Au ppm	Cu %	Ag ppm
105,188	6,899,961	387,945	2086	<0.2	0.21	0.4
105,189	6,898,359	389,162	2466	<0.2	0.01	6
105,190	6,898,297	389,145	2451	<b>0.11</b>	0.23	<b>53.5</b>
105,191	6,899,098	388,941	2584	<0.2	0.3	<b>260</b>
105,192	6,901,169	387,767	2052	<b>0.99</b>	<b>0.8</b>	<b>101</b>
105,201	6,901,028	387,756	2003	<b>0.38</b>	<b>1.18</b>	<b>10.5</b>
105,202	6,900,853	387,587	1927	<b>0.91</b>	<b>1.89</b>	<b>115</b>
105,211	6,900,617	387,921	2060	<0.2	<b>0.53</b>	4
105,212	6,900,603	388,060	2104	<0.2	0.43	6.1
105,213	6,900,447	388,066	2109	<b>1.37</b>	<b>1.52</b>	<b>83.5</b>
105,214	6,900,461	387,704	1988	<0.2	<b>0.54</b>	1.6
105,215	6,900,464	387,701	1974	<b>0.32</b>	<b>3.09</b>	<b>36.1</b>
105,216	6,900,464	387,701	1974	<0.2	<b>1.33</b>	6.8
105,217	6,900,526	387,706	1959	<0.2	0.28	5.3
105,218	6,899,966	388,065	2066	<0.2	<b>0.8</b>	6.8
105,219	6,899,953	388,086	2068	<0.2	0.18	2.1
105,220	6,900,279	388,103	2110	<b>0.16</b>	0.15	2.4
105,221	6,900,213	388,103	2116	<b>0.56</b>	<b>1.02</b>	<b>12.4</b>
105,222	6,900,244	388,056	2094	<b>0.55</b>	<b>1.33</b>	<b>10.7</b>
105,223	6,900,244	388,056	2094	<0.2	0.35	3.9
105,224	6,900,146	388,054	2065	<b>0.26</b>	<b>0.82</b>	4.3
105,225	6,900,152	387,990	2062	<b>0.24</b>	0.4	8.6
105,228	6,899,361	387,089	2210	<0.2	0.01	0.3
105,229	6,899,733	387,039	2068	<b>1.6</b>	<b>3.66</b>	<b>179</b>
105,230	6,899,834	387,170	2059	<b>6.73</b>	<b>2.61</b>	<b>34.1</b>
105,231	6,900,269	387,313	2093	<b>0.43</b>	<b>1.9</b>	<b>14.4</b>
105,232	6,899,405	387,929	2277	<0.2	0.03	0.9
105,233	6,899,566	387,904	2224	<0.2	<b>0.96</b>	5.8
105,234	6,899,609	387,993	2168	<b>0.37</b>	<b>7.28</b>	<b>259</b>
105,235	6,899,696	387,992	2142	<0.2	<b>0.63</b>	2.7
105,236	6,899,566	387,904	2224	<b>0.41</b>	<b>0.88</b>	6.4
105,237	6,899,587	388,305	2184	<0.2	0.05	1.8
105,238	6,899,687	388,058	2125	<0.2	0.08	0.9
105,239	6,897,892	388,994	2384	<b>1.49</b>	<b>1.21</b>	<b>240</b>
105,240	6,897,892	388,994	2384	<b>1.07</b>	<b>1</b>	<b>230</b>
105,241	6,897,277	389,442	2317	<0.2	0.28	1
105,242	6,897,437	389,407	2338	<0.2	0.2	<b>13.5</b>
105,243	6,897,806	389,060	2388	<0.2	0.12	<b>16.3</b>
105,244	6,897,653	389,157	2372	<0.2	0.13	1.9
105,245	6,897,653	389,157	2372	<0.2	0.19	2.1
105,246	6,897,660	389,269	2345	<0.2	<0.01	0.1
105,247	6,897,178	389,584	2297	<0.2	<0.01	0.1
105,248	6,897,201	389,492	2298	<0.2	0.13	0.6
105,249	6,896,725	389,087	2330	<b>0.2</b>	0.03	1.1
105,250	6,896,760	389,137	2312	<b>0.28</b>	<b>1.35</b>	<b>32.4</b>
105,251	6,897,040	389,296	2339	<b>0.62</b>	<b>1.12</b>	<b>48.8</b>
105,252	6,897,070	389,319	2318	<0.2	0.28	<b>12.9</b>
105,253	6,897,070	389,319	2318	<0.2	<b>1.53</b>	<b>15</b>

105,254	6,897,091	389,331	2318	<b>0.87</b>	0.24	6.7
105,255	6,897,091	389,331	2318	<0.2	0.1	3.8
105,256	6,897,152	389,359	2290	<b>10</b>	<b>1.24</b>	<b>54.2</b>
105,257	6,896,528	389,300	2267	<b>7.46</b>	<b>1.49</b>	<b>41.1</b>
105,258	6,896,415	389,247	2285	<0.2	0.25	0.9
105,259	6,895,968	388,791	2336	<0.2	<b>0.83</b>	3.3
105,260	6,897,163	389,029	2361	<b>2.09</b>	<b>0.65</b>	<b>50.3</b>
105,261	6,896,482	387,733	1972	<0.2	<0.01	0.1
105,262	6,896,483	387,599	1957	<0.2	0.01	0.1
105,263	6,896,484	387,535	1946	<b>0.9</b>	0.17	0.3
105,264	6,896,458	387,501	1955	<b>0.32</b>	0.07	0.5
105,265	6,896,475	387,498	1944	<0.2	0.21	0.6
105,266	6,896,458	387,501	1955	<0.2	0.07	0.3
105,267	6,896,469	387,406	1938	<0.2	0.08	0.3
105,268	6,896,352	387,323	1977	<0.2	<0.01	<0.1
105,269	6,895,860	387,848	2063	<b>1.96</b>	<b>1.87</b>	3.3
105,270	6,895,868	387,848	2061	<0.2	<b>1.41</b>	1.6
105,271	6,896,056	387,893	2096	<0.2	<b>0.68</b>	0.2
105,272	6,896,066	387,896	2094	<b>0.16</b>	0.12	0.4
105,275	6,895,594	387,912	2169	<b>0.39</b>	0.09	0.3
105,276	6,895,608	387,804	2149	<0.2	<0.01	0.1
105,277	6,896,550	387,805	1993	<0.2	<0.01	0.1
105,278	6,895,364	388,716	2251	<0.2	<0.01	0.6
105,279	6,895,362	388,724	2252	<0.2	0.01	0.3
105,280	6,895,409	388,758	2282	<0.2	0.02	1.3
105,281	6,895,484	388,833	2334	<b>1.25</b>	<b>1.66</b>	<b>107</b>
105,282	6,895,721	387,226	1946	<0.2	<0.01	0.2
105,283	6,895,593	387,167	1939	<0.2	<0.01	0.1
105,284	6,895,457	387,197	1948	<0.2	0.01	0.4
105,285	6,895,129	389,498	2114	<b>2.65</b>	<b>2.26</b>	4.6
105,286	6,895,406	389,306	2243	<0.2	0.01	0.1
105,287	6,895,328	389,134	2287	<0.2	<b>2.91</b>	1
105,288	6,895,545	389,247	2219	<b>1.69</b>	<b>3.49</b>	<b>207</b>

- Analysis completed by ALS laboratory in Coquimbo, Chile.
- All samples analysed gold + 50 elements by ME-MS41 method. All samples were analysed for gold (Au-AA25) by 30g fire assay with AA finish if greater than 0.2ppm gold in ME-MS41 method, copper (Cu-OG46) (4acid digest with AAS finish), silver (Ag-OG46) (4 acid digest with AAS finish).

The information in this announcement was compiled by Michael Fowler, Genesis Minerals Limited's Managing Director, who is a Member of The Australasian Institute of Mining and Metallurgy. Michael Fowler has sufficient experience that is relevant to the style of mineralisation and type of deposit under consideration and to the activity which he is undertaking to qualify as a Competent Person as defined in the 2004 JORC Code. Michael Fowler consents to the inclusion in the announcement of the matters based on his information in the form and context in which it appears.